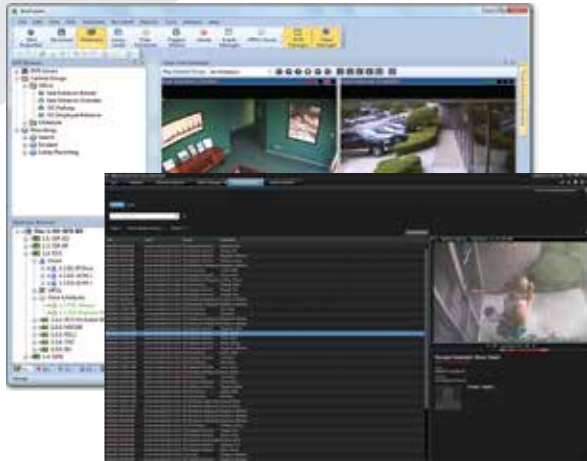


# XProtect Integration ACM Plugin



## Integrated Video Benefits

- Choice of interface to control doors and view cameras
- Best-of-breed open platform application for access control and video management
- Scan for cameras eliminates time consuming setup
- Video thumbnails when hovering over camera in tree
- Video verification before granting access in a facility (ACM Plugin)
- Camera groups
- Drag and drop cameras and groups for live view
- Drag and drop saved recordings for playback
- Playback of multiple cameras simultaneously
- Auto call-up of live or recorded video on access event or alarm
- Ability to plot cameras and views on graphic maps in DNA Fusion
- Managed integration ensures version compatibility

## DNA Fusion™ & XProtect®

### Overview

Open Options' DNA Fusion™ seamlessly integrates with Milestone Systems' XProtect® Access Control Module, providing operators the ability to view alarms and events from within the XProtect Smart Client, as well as control doors within the system. The integration is supported in XProtect Enterprise and XProtect Corporate Video Management Software.

DNA Fusion data and events can also be monitored and viewed directly from within the XProtect Smart Client interface, providing full bi-directional functionality and a choice of interface depending on the task at hand.

Verify identity by showing access control events and cardholder images along with associated video in XProtect Recording Servers.

Access control doors can be placed on XProtect Smart Client maps for quick and easy control or lockdown in emergency situations.

# Two-Way Integration

## Features in DNA Fusion



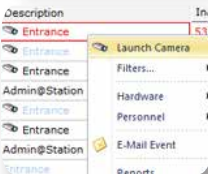
### Video Tooltips

Hover over any camera in tree for a live tooltip preview.



### PTZ Control

Click anywhere to position camera and hold to zoom.



### Video on Events

View live video associated with access control events.



### Playback Controls

Playback recorded video on multiple cameras at once.



### Multiple Views

View multiple cameras within DNA Fusion (1,2,4,9, or 16).



### Video on Graphics

Plot video on graphic maps for quick access & location.

## Features in XProtect



### Simple Setup

Quick and easy setup in XProtect Smart Client software.

### Plot/Control Doors on Maps

Plot door on XProtect maps and control door mode, momentary unlock, or lockdown.

### View Live Access Events

View real-time access control events in multiple monitor views.

### Lockdown All Doors

Secure all doors with a single click.

### Double-click for Playback

Simply double-click access events to view associated video recording.

### Video Verification

Verify cardholders by comparing video with access request and personnel photo from DNA Fusion.